

**FAST TRACK TO GETTING A WL2K E-MAIL ACCOUNT – AND USING IT!**  
**NO TNC/DATA TERMINAL OR RADIO REQUIRED**  
**NO STUDYING REQUIRED**  
**How easy can that be?**  
**Last modified Feb 14, 2011**

Follow this detailed step-by-step guide *precisely* (precisely is the key/operative word) and you will have an e-mail account @ winlink.org that you can use without a data terminal or radio. This will supplement, but not interfere with, your existing regular (commercial) e-mail account. *You can add those items later to have E-Mail Over Ham Radio when it is needed for your purposes.*

What you will do:

1. Read this note to the end of this page.
2. Re-read this note to the end of this page.
3. Follow the instructions in this guide for –

Downloading and saving two compressed (.zip) files to your hard drive.

Unzipping the files and storing the included file(s) on your computer hard drive.

Determining the grid square for your QTH.

Check to be sure your computer operating system is up to date (most will be.)

Run one of the unzipped files to be sure you have nominal internet access (most will.)

Install the Paclink program to your hard drive and configure it for your new e-mail account.

Add the new e-mail account to your existing E-Mail Client such as Outlook Express, Outlook, Thunderbird; Windows Mail – there are others.

Send and receive your first e-mails using your new @winlink.org account.

You may then use your @winlink.org account just like you would your regular (commercial) e-mail account. You can set it up so that all your incoming e-mail – that from your regular account and the @winlink.org account will appear on your e-mail client screen w/o toggling back/forth to see which is what and where from.

What you need is:

1. Ham Radio license of any class.
2. Computer with updated Windows 2000, XP, Vista, or Windows 7 operating system.
3. Broad band Internet service ( i.e. cable or DSL)
4. An existing Internet e-mail account.
5. Twenty minutes of time (maybe 22 if you are somewhat computer challenged.)

If you have problems with any of this check the HELP files of PACLINK. Your sources for help should be **in this order**:

Paclink Help Files – they are very complete.

Close friend who knows how

WL2K Go-to-Person for your ARES Group or District

[Join this Yahoo group and ask for specific help](#) .

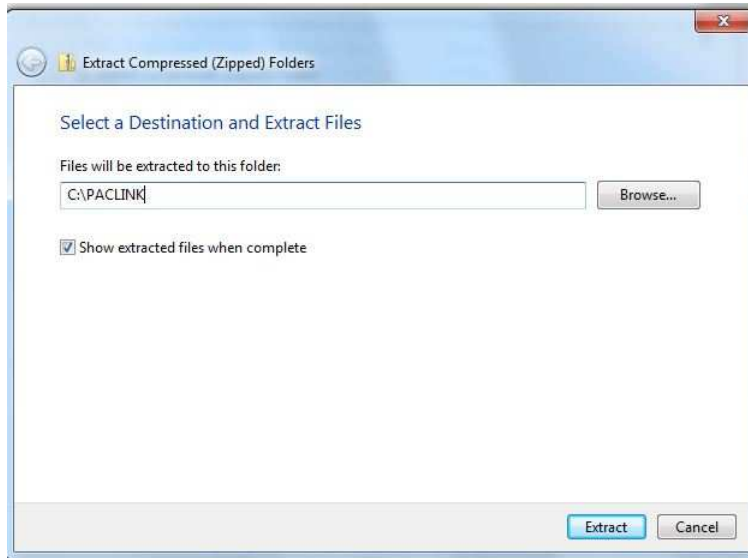
**NOW-** [Check out this five-minute Power Point Show](#) to see where Paclink fits in with your computer.

Continue – be sure to read every section BEFORE starting the section!

## GETTING STARTED ON WL2K

[Click Here](#) to view the User Programs available from the WL2K FTP website.

**Left click on** PACLINK Setup and SAVE it to your hard drive, Do the same for RMS\_Link\_Test. Be sure you know where they land on your hard drive. The files are compressed containing all files necessary for getting you set up with an @ winlink.org Email account. Locate each file on your hard drive, **Right click** on the downloaded file and **EXTRACT ALL**



A dialog box will appear suggesting the files be extracted to a folder. **CHANGE that to:**

C:\PACLINK

As shown on the left. The graphic is an example for Windows 7; your dialog box may not be the same.

**Extract.** Now the necessary files are on your computer where you can find them. The two file names and approximate sizes are:

Paclink set up	Windows Installer Package	1,528 KB
RMS Link Text .exe	Application	40 KB

Follow the instructions below for –

Determining the grid square for your QTH.

Checking to be sure your computer operating system is up to date (most will be.)

Running one of the files to be sure you have nominal internet access (most do.)

**(Your computer must be on the internet and browser open.)**

[Determining your grid square.]

1. Use your browser and go [QRZ.com](http://QRZ.com).
  - a) Put your call letters in the search window and click on SEARCH
  - b) Click on “Click for more detail” in the green strip
  - c) Find your Grid Square and make a note of it for use later.

If you are not listed on QRZ.com use [Google Maps](#)

[Checking to determine if your computer operating system is up to date]

2. Go to Control Panel/Add Remove Programs. (Program Features, etc.) When the list is populated scroll down to see what Microsoft .netframework versions are installed.


OS	Microsoft .net Framework Version required
Windows 2000	1.1 and 2.0
Windows XP	1.1 and 2.0 and 3.0 and 3.5
Windows Vista	3.5
Windows 7	3.5 or 4

If your OS does not have the required version(s) run windows update on the computer.

[Running one of the files to be sure you have nominal internet access.]

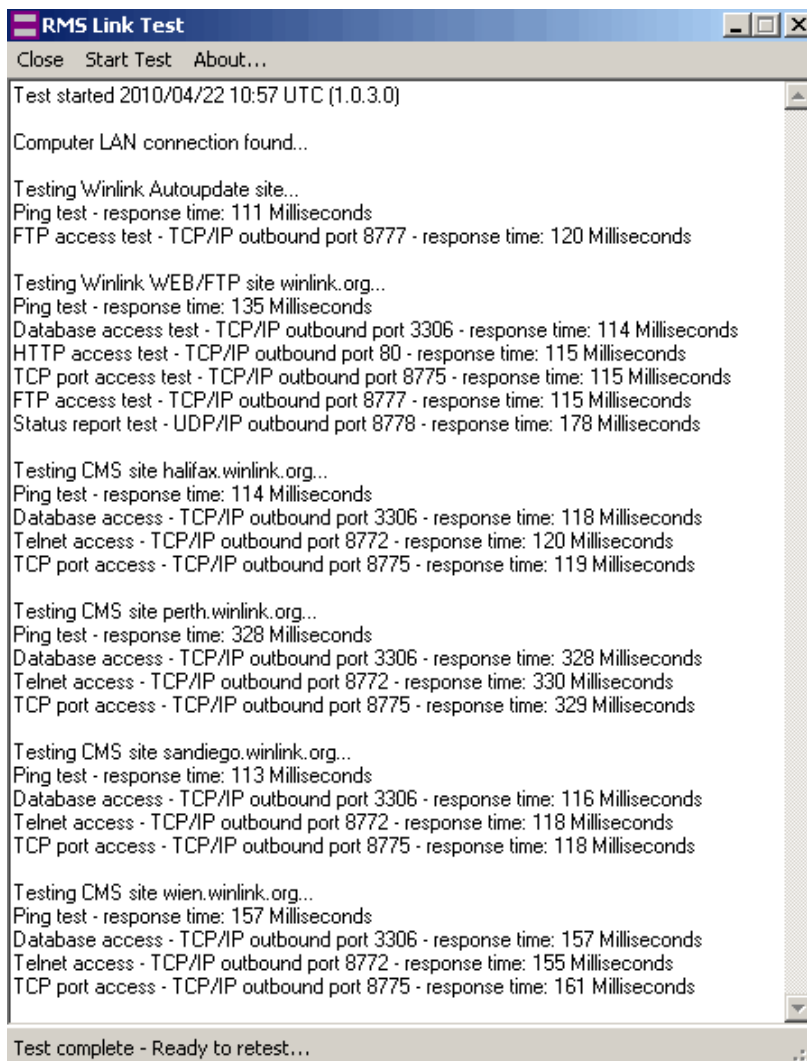
**Double Click** on or run the RMS LINK TEST.exe saved earlier to see if the proper *outgoing* ports are open in your firewall and router.

Review the results-

- a) The first test is for auto updating WL2K programs using port 8777. 
- b) The second is for the WL2K/FTP site on ports 3306, 80, 8775, 8777, and 8778.
- c) The remaining tests are to WL2K CMS sites using ports 3306, 8772, and 8775.

**NOTE:** It is only necessary that at one of the four CMS tests be successful on Port 8772.

If tests a) b) and at least one CMS site on c) are successful you have proper internet access for WL2K client programs. You may go to the next page to start installing and configuring Paclink.



```
RMS Link Test
Close Start Test About...

Test started 2010/04/22 10:57 UTC (1.0.3.0)

Computer LAN connection found...

Testing Winlink Autoupdate site...
Ping test - response time: 111 Milliseconds
FTP access test - TCP/IP outbound port 8777 - response time: 120 Milliseconds

Testing Winlink WEB/FTP site winlink.org...
Ping test - response time: 135 Milliseconds
Database access test - TCP/IP outbound port 3306 - response time: 114 Milliseconds
HTTP access test - TCP/IP outbound port 80 - response time: 115 Milliseconds
TCP port access test - TCP/IP outbound port 8775 - response time: 115 Milliseconds
FTP access test - TCP/IP outbound port 8777 - response time: 115 Milliseconds
Status report test - UDP/IP outbound port 8778 - response time: 178 Milliseconds

Testing CMS site halifax.winlink.org...
Ping test - response time: 114 Milliseconds
Database access - TCP/IP outbound port 3306 - response time: 118 Milliseconds
Telnet access - TCP/IP outbound port 8772 - response time: 120 Milliseconds
TCP port access - TCP/IP outbound port 8775 - response time: 119 Milliseconds

Testing CMS site perth.winlink.org...
Ping test - response time: 328 Milliseconds
Database access - TCP/IP outbound port 3306 - response time: 328 Milliseconds
Telnet access - TCP/IP outbound port 8772 - response time: 330 Milliseconds
TCP port access - TCP/IP outbound port 8775 - response time: 329 Milliseconds

Testing CMS site sandiego.winlink.org...
Ping test - response time: 113 Milliseconds
Database access - TCP/IP outbound port 3306 - response time: 116 Milliseconds
Telnet access - TCP/IP outbound port 8772 - response time: 118 Milliseconds
TCP port access - TCP/IP outbound port 8775 - response time: 118 Milliseconds

Testing CMS site wien.winlink.org...
Ping test - response time: 157 Milliseconds
Database access - TCP/IP outbound port 3306 - response time: 157 Milliseconds
Telnet access - TCP/IP outbound port 8772 - response time: 155 Milliseconds
TCP port access - TCP/IP outbound port 8775 - response time: 161 Milliseconds

Test complete - Ready to retest...
```

## RMS TEST FAILED

Paclink uses a number of internet ports in normal operation and for auto updating. The program *will* function with no internet connection but auto updates and changes to accounts requiring access to the WL2K database cannot be done. If you are running with a firewall program or a hardware router/firewall it may be necessary to open these ports depending on how the firewall is set up. If you are using ZoneAlarm open up the ICMP ports listed below. Here is a list and functions of the various ports used:

**Outbound Ports:** (all outbound ports are grouped to facilitate router/firewall setup)

CMS Access: TCP link to appropriate CMS sites, port 8775

AutoUpdate: Outbound ftp (passive) connection to ftp.winlink.org port 8777

Telnet connections: Port 8772 for CMS Telnet sites. <<MUST HAVE IF NO RADIO!

Version/Status Reporting: UDP outbound to winlink.org port 8778

## INSTALLING AND CONFIGURING PACLINK CLIENT

### WITH E-MAIL CLIENT NOT RUNNING

NOTE: If you have previously installed Paclink on this computer you MUST **uninstall/remove** Paclink set up in add/remove programs. Otherwise, continue here.

1. Using **START**- run - browse or **Windows Explore** to find the folder where you saved the two files earlier -

**run Paclink Set up** - Take all defaults during the set up.

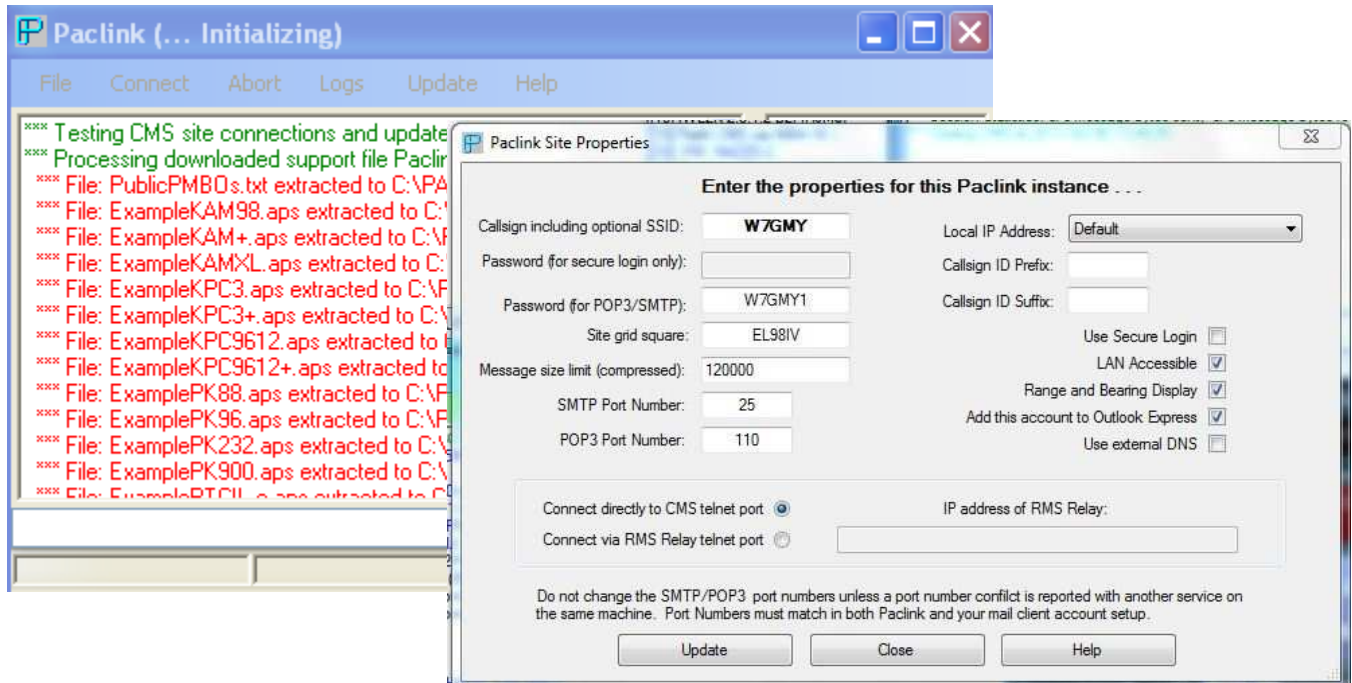
All Paclink-related files will be placed in the c:\PACLINK folder.

2. Using **START** –run – browse or **Windows Explorer** to find **C:\PACLINK\bin** folder

**run Paclink.exe** (application) You may find two Paclink ICONs - be certain it is the larger file you select to run

 Paclink	10/16/2009 5:46 AM	Icon	3 KB
 Paclink	2/15/2010 10:32 AM	Application	640 KB

Paclink (Initializing) window will start, run a check for CMS sites, and download all the files needed. Paclink Site Properties window will appear. Wait until all downloading is complete.

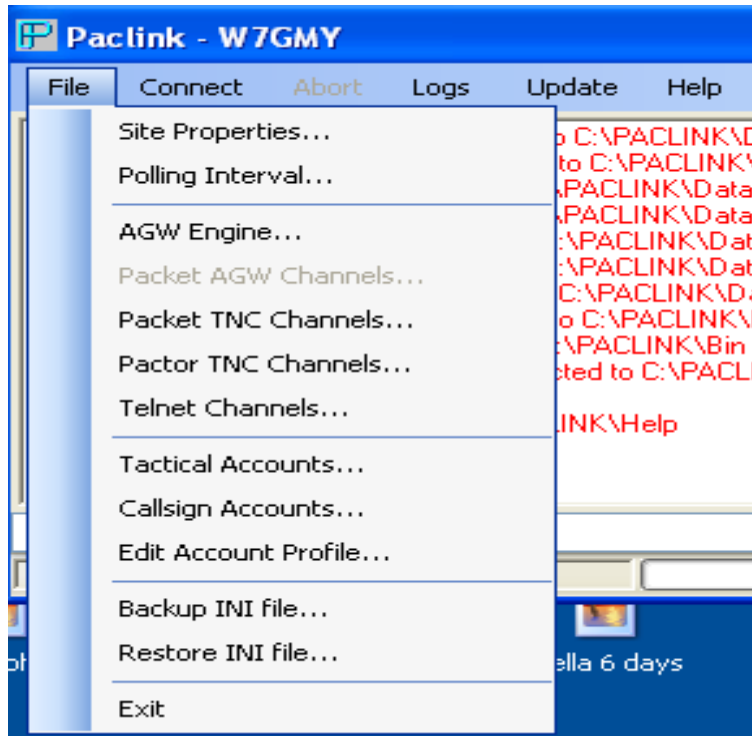


Fill in your callsign w/o SSID, password for POP3/SMTP, and grid square; leave 120000, 25,110. In Local IP Address use Default (If Vista use 127.0.0.1) check LAN Accessible, Range and Bearing Display, and if using Outlook Express check that. **Otherwise do not check Outlook Express.**

**NOTE:** The Password is NOT for security, it is because most E-Mail clients require a password. It is re-recommended you use your call followed by the numeral 1 (w/o a space or dash) for the password (i.e. W7GMY1 for the example above.)

**Click UPDATE** -

Paclink Ready in Paclink window.



Left click once on **FILE** –

The files section provides access for configuring all channels and adding accounts to the PACLINK e-mail server.

**CLICK** on *Telnet Channels*.

**Fill in as sample below.**

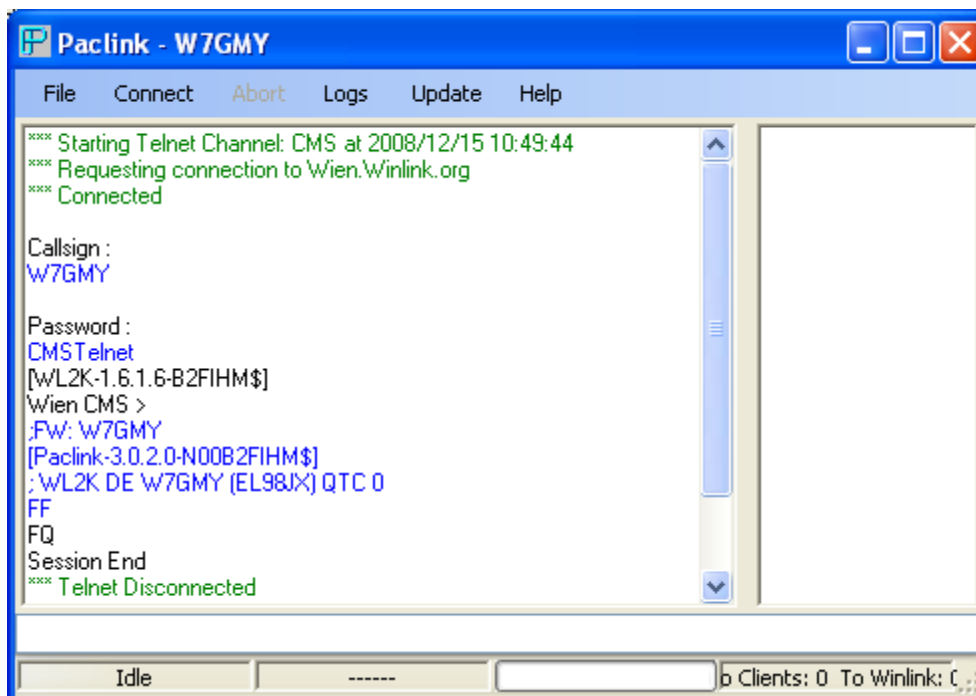
Channel name **CMS**, Channel priority **1**, and Check Channel **enabled**.

**CLICK Update The Channel.**



Back to PACLINK window.

TEST THE CMS TELNET LINK – At the top of the PACLINK Window **Click on** Connect/Connect to CMS (or use *Autoconnect*.) The exchange with a CMS should work like this.



**IF YOU ARE USING OUTLOOK EXPRESS SKIP TO  
[TESTING PACLINK WITH OUTLOOK EXPRESS](#)**

Paclink will work with almost any POP3 Email Client. Help for the general case, and specific help for Mozilla Thunderbird may also be found in the Paclink Help files –Help/ Contents/ Configuration/ Email Clients. There is a section on the N FL [website](#) that contains details for several other Email clients.

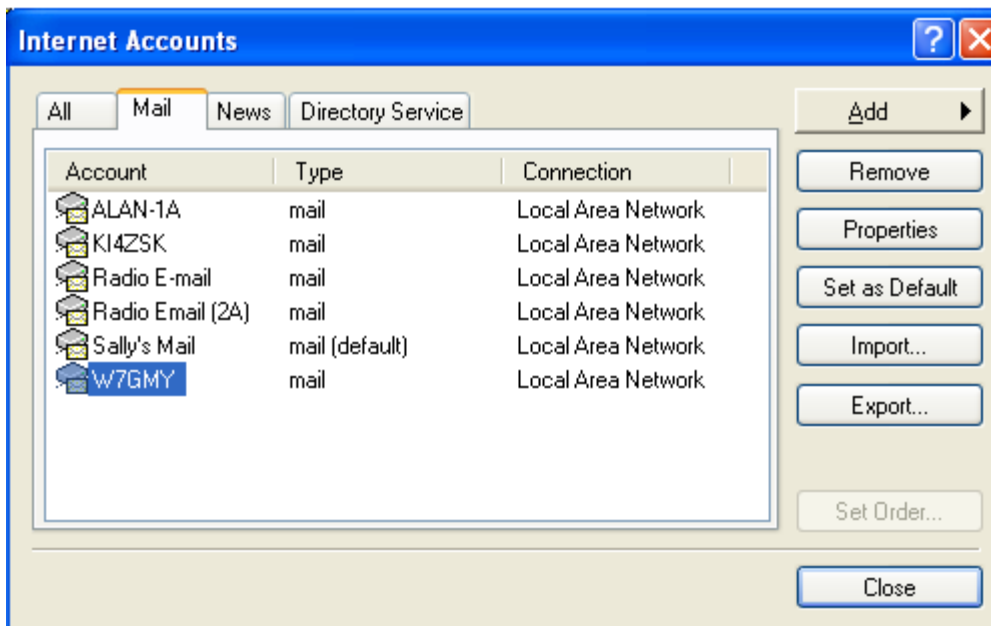
Once you get your WL2K account working with your Email Client and with Paclink – go to the section below on **SENDING YOUR FIRST E-MAIL FROM THE HAM RADIO E-MAIL ACCOUNT.**

THE REST OF THIS PAGE IS BLANK  
THE DOCUMENT COMMENCES ON THE FOLLOWING PAGE

## TESTING PACLINK WITH OUTLOOK EXPRESS

With PACLINK running –

1. **Start** Outlook Express – A window requiring the password for the new e-mail account will appear as on the right.
2. Fill in the *E-Mail password* for this account (from Paclink Site Properties above – your call followed by a 1) – click *OK*
3. Back to the Outlook Express main screen. Across the top click on **Tools**, and curser down to click on **Accounts and then Mail Tab**. Your new account should be on the list as shown below.



4. Click *Close* and return to the main Outlook Express screen.

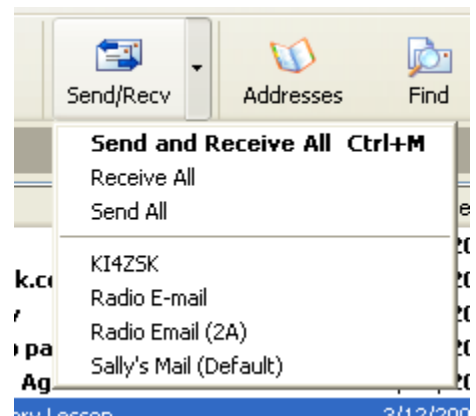
5. Across the top you should find a *SEND/Recv* button

with a pull-down arrow. Pull the arrow down to see the list of active e-mail accounts on this computer.

6. Click on your new account – you will see the screen momentarily flash while Outlook Express polls PACLINK for any new mail.

If you do not see an error message from Outlook Express you now have an active Ham Radio account.

NOTE: Remember that you **must have PACLINK running** on the computer in order to poll or send with the Ham Radio account.



**FYI** – In Tools/Accounts – highlight your Ham Radio account then click on *Properties*. At the General Tab note the bottom line:

“Include this account when receiving mail or synchronizing.”

Any e-mail account with that line checked will be polled every time you look for e-mail.

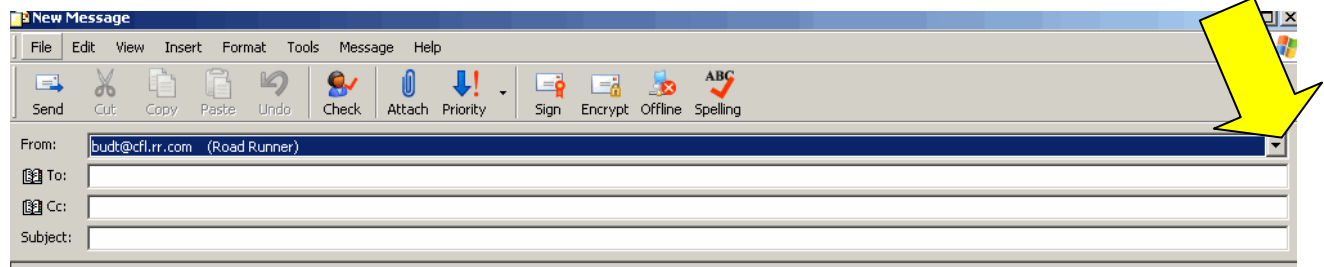
If an e-mail server, such as your ISP or **PACLINK**, cannot be found, you will receive an error message when Outlook Express sends or polls for e-mail.

THE REST OF THIS PAGE IS BLANK  
THE DOCUMENT COMMENCES ON THE FOLLOWING PAGE

## SENDING YOUR FIRST E-MAIL FROM THE HAM RADIO E-MAIL ACCOUNT

Create a New Mail message. (File/New/Mail message) using the Ham Radio account.

**NOTE: If there is only the default e-mail account in the From window use the pull-down arrow at the far right to find the Ham Radio E-mail account.**



1. Set up this message to: test@winlink.org;n0ia-11@winlink.org  
Cc: your commercial e-mail account

(You have cleared incoming mail to your commercial account from @winlink.org haven't you?)

2. Subject: I am on WL2K! <your call>  
Hint: Make that subject exact as above (< > not required around your call.)

3. TEXT - report the following in the text:

Your call  
Your name  
Your town  
How long did this assignment require?  
What version of PACLINK do you now have? (Look in Help/About)

4. After checking the entries, SEND the message.
5. Go to the PACLINK screen and click on Connect/Autoconnect. Watch the PACLINK screen for the Telnet exchange.

When the e-mail is received at Winlink.org you will get an automatic reply message. Check in about five minutes and poll for new e-mail by repeating step 5 above. If you see the e-mail coming in PACLINK, then poll for e-mail using Outlook Express – SEND/RCV.

If you have problems with this lesson check the HELP files of PACLINK. Your sources for help should be **in this order**:

Paclink Help Files – they are very complete.  
Close friend who knows how  
WL2K Go-to-Person for your ARES Group or District  
[Join this Yahoo group and ask for specific help](#)

Thanks for your interest in this activity.

73 - bud NOIA  
Assistant Section Emergency Coordinator /WL2K  
Northern Florida ARRL Section